

# Imizu City Flood Hazard Map

Assumed Maximum Rainfall Overall View  
(created in March 2020)

## What is a flood hazard map?

- In response to recent heavy rain disasters, the Flood Control Law was revised, and the rainfall conditions were changed from the "planned rainfall", which is focused on river maintenance, to the "estimated maximum rainfall".
- This flood hazard map is based on the prediction of inundation assuming that the Shogawa, Oyabe, Shindori, Shimojo, and Wada rivers are flooded due to receiving the maximum expected rainfall and that multiple parts of the embankments are broken. It displays the range and water depth, and also shows the designated emergency evacuation sites to which you can evacuate. In addition, it is not likely that all areas shown in the hazard map will be flooded at the same time.
- In this assumption, flooding of tributaries and small rivers, rainfall on a larger scale than expected, flooding due to storm surges and inland waters, etc. are not taken into consideration. The inundation depth may differ from the actual inundation depth.

[Rain conditions in each river basin - necessary for designating estimated flood areas]

Shogawa	48 hr total rainfall 655 mm
Oyabe River	12 hr total rainfall 415 mm (Tsuwaza point)/365mm (Nagae point)
Jinzu River	48 hr total rainfall 537 mm
Wada River	24 hr total rainfall 773.9 mm
Shimojo River	24 hr total rainfall 809 mm

## How to read and use the flood hazard map

- If the area you live in has high rainfall, check how deep it will be flooded.
- Check the nearest evacuation center and find a safe way to evacuate to that center. Remember that during heavy rain, river water levels can rise and bridges can be closed.
- If you believe that your house may collapse, that water in your area will reach a depth of 3m or more, or that a nearby river will overflow, you may need to evacuate early.
- If there is a risk of flooding, promptly follow the "Caution Level 3 - Evacuation Preparation/Evacuation Start for the Elderly", "Caution Level 4 - Evacuation Advisory", and "Caution Level 4 - Evacuation Instruction (Urgent)" announced by the city. Please evacuate as detailed in those instructions.
- If it is too late to safely evacuate to a designated emergency evacuation site, do not put yourself at risk - at that point, please evacuate to a safe, high place.

### Usage Guide

**Flood Depth**

- Flood Depth 10.0~20.0m
- Flood Depth 5.0~10.0m
- Flood Depth 3.0~5.0m
- Flood Depth 0.5~3.0m
- Flood Depth 0~0.5m

Areas in which houses may collapse due to flooding

- Flood flow
- Riverbank erosion

Sediment disaster caution area  
Sediment disaster special caution area

00 All floors can be evacuated to  
00 Safe from the second floor up  
00 Safe from the third floor up  
00 Usage prohibited

! Precautions for evacuation

Water Level Observation Sta. River Camera  
City Hall Police Station  
Fire Department Major Hospitals

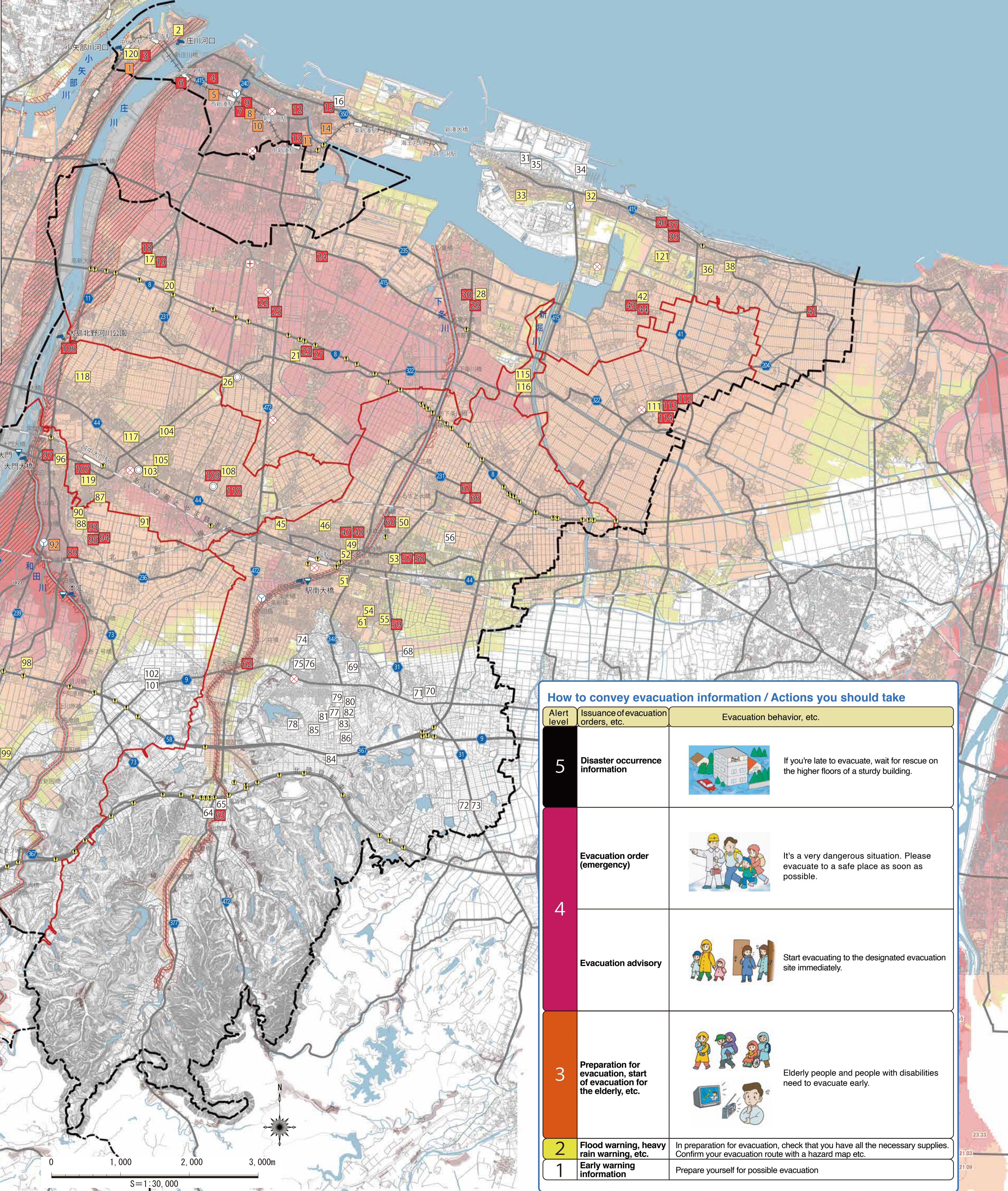
District Boundary  
City Boundary

## Flood hazard map information hotline

**Imizu City Hall**  
River/Harbor Division ☎ 0766-51-6681  
General Affairs Division ☎ 0766-51-6632  
Disaster Prevention Crisis Management Group

## Flood Evacuation Measures to Control Damage and Improve Safety

<p><b>Depending on the situation, evacuate quickly</b></p> <p>Even if evacuation information has not been announced, please use your best judgment to assess the situation and if you think it will flood, evacuate of your own volition.</p>	<p><b>Leave an evacuation note in your house</b></p> <p>It is a good idea to leave a note telling absent family members where to evacuate to, once they return and find that you are already gone.</p>
<p><b>Minimize the number of things you bring with you</b></p> <p>Pack emergency items in a backpack so that you can use both hands freely while evacuating.</p>	<p><b>Help each other as a group</b></p> <p>Avoid acting alone and evacuate to a place decided on together by you and your neighbors.</p>
<p><b>Be careful about evacuation during flooding</b></p> <p>Even in shallow water, walking will be difficult in a fast current. Also, be careful when evacuating because the water will be muddy and brown and may hide sharp objects and other dangerous things.</p>	<p><b>Use a safe route when evacuating</b></p> <p>While evacuating, avoid riversides and underground walkways, and choose a wide path that is as safe as possible.</p>
<p><b>Prepare personal information cards</b></p> <p>Elderly people and children should bring a note with their address, name, contact information, etc. on it in advance and put it in a safe, dry place when they evacuate (so they can be brought home if they get lost).</p>	<p><b>Confirm the safety of your evacuation route</b></p> <p>Consider participating in the city's or resident association's evacuation drills and check the flood hazard map regularly to evaluate the safety of your evacuation route.</p>



## How to convey evacuation information / Actions you should take

Alert level	Issuance of evacuation orders, etc.	Evacuation behavior, etc.
5	Disaster occurrence information	If you're late to evacuate, wait for rescue on the higher floors of a sturdy building.
4	Evacuation order (emergency)	It's a very dangerous situation. Please evacuate to a safe place as soon as possible.
	Evacuation advisory	Start evacuating to the designated evacuation site immediately.
3	Preparation for evacuation, start of evacuation for the elderly, etc.	Elderly people and people with disabilities need to evacuate early.
2	Flood warning, heavy rain warning, etc.	In preparation for evacuation, check that you have all the necessary supplies. Confirm your evacuation route with a hazard map etc.
1	Early warning information	Prepare yourself for possible evacuation

## Designated Emergency Evacuation Sites Designated Shelter

No.	Facility Name	Evacuate to 2F+	Evacuate to 3F+	Not for use during floods
1	Kyuu/Naka Fushiki Elementary School			
2	Shousei Community Center			
3	JFE Material Ltd. Gym			
4	Shinminato Community Center			
5	Toyama Prefectural Shinminato High School			
6	Iki-Iki Choujukan			
7	Shinminato Exchange Hall			
8	Shinminato Chuo Culture Hall			
9	Shinminato Chuubu Nursery School			
10	Shinminato Elementary School			
11	Hojozo Elementary School			
12	Hojozo Community Center			
13	Hojozo Nursery School			
14	Shinminato Junior High School			
15	Hachiman Preschool			
16	Shinminato Communication Hall			
17	Tsukahara Elementary School			
18	Tsukahara Community Center			
19	Tsukahara Preschool			
20	Takaoka District Land Transport Business Cooperative			
21	Tsukurimichi Elementary School			
22	Shinminato Nanbu Junior High School			
23	Tsukurimichi Community Center			
24	Shinminato General Gym-Shinminato Martial Arts Hall			
25	Shinminato Rural Environment Improvement Center			
26	Imizu City Hall Nunome Branch Office Annex			
27	Shinminato Tsukurimichi Nursery School			
28	Kataguchi Elementary School			
29	Kataguchi Community Center			
30	Kataguchi Preschool			
31	Horioka Elementary School			
32	Shahoku Junior High School			
33	Horioka Community Center			
34	Kairyuu Sportsland			
35	Horioka Preschool			
36	Tomei Elementary School			
37	Ebie Community Center			
38	Toyama Technological High School - Imizu Campus			
39	Ebie Children's Center			
40	Ebie Childcare Center			
41	Hongou Community Center			
42	Shichimi Community Center			
43	Shichimi Gym			
44	Shichimi Kindergarten			
45	Toyama Prefecture Kosugi High School			
46	Sanga Community Center			
47	Kosugi Seibu Nursery School			
48	Sanga Children's Center			
49	Former Lifelong Learning Center			
50	Kosugi Elementary School			
51	Kosugi Junior High School			
52	Imizu Citizens' Exchange Plaza (QQ Plaza)			
53	Hibari Community Center			
54	Kosugi Culture Hall			
55	Kosugi Gym			
56	Kosugi General Sports Center			
57	Kosugi Toubu Nursery School			
58	Hibari Children's Center			
59	Kosugi District Center			
60	Aoi Kindergarten			
61	Katayama Gakuen Elementary School (Gym Arena)			
62	Hashigejou Community Center			
63	Kanayama Elementary School			
64	Kanayama Community Center			
65	Kanayama Nursery School			
66	Ogo Community Center			
67	Ogo Nursery School			
68	Uta no Mori Elementary School			
69	Toyama Prefectural University			
70	Kurokawa Community Center			
71	Kurokawa Nursery School			
72	Ikedada Community Center			
73	Ikedada Nursery School			
74	Taikoyama Elementary School			
75	Taikoyama Community Center			
76	Taikoyama Aoi-En			
77	Nakataikoyama Elementary School			
78	Nakataikoyama Community Center			
79	Sennari Nursery School			
80	Taikoyama Children's Center			
81	Sugi no Ko Nursery School			
82	Minamitaikoyama Community Center			
83	Kosugi Minami Junior High School			
84	Kosugi Communication Center			
85	Ai Ai Nursery School			
86	Aoi Kindergarten #3			
87	Daimon Junior High School			
88	Daimon Elementary School			
89	Futakuchi Community Center			
90	Daimon General Gymnasium			
91	Toyama Prefecture Daimon High School			
92	Comprehensive Child-rearing Support Center			
93	Daimon Wakaba Kindergarten			
94	Insurance Center			
95	Daimon Kirara Nursery School			
96	Daimon General Hall			
97	Daimon Community Center			
98	Daimon Rural Environment Improvement/Community Center			
99	Kushida Community Center			
100	Asai Community Center			
101	Mitoda Community Center			
102	Mitoda Nursery School			
103	Oshima Community Center			
104	Imizu Ozora Nursery School			
105	Oshima Elementary School			
106	Oshima Rural Environment Improvement Center			
107	Oshima Nanbu Nursery School			
108	Oshima Gym			
109	Asoboukan (Oshima Chuo Park Indoor Play Area)			
110	Oshima Tsuibasa Nursery School			
111	Shimomura Elementary School			
112	Shimomura Gym			
113	Shimomura Community Center			
114	Shimomura Nursery School			
115	Clean Peer Imizu			
116	Miracle Hall Plaza Building			
117	Aprio 3 Floor Parking Garage			
118	Special Elderly Nursing Home Suzuran 4th Floor Meeting Room			
119	Imizu Agricultural Co-op Head Office 3rd Floor Large Hall			
120	JFE Material (Branch Office) Management Center (2F)			
121	Otsuka Pharmaceutical Factory Toyama Factory Construction Bldg #2 (Upstairs Branch)			